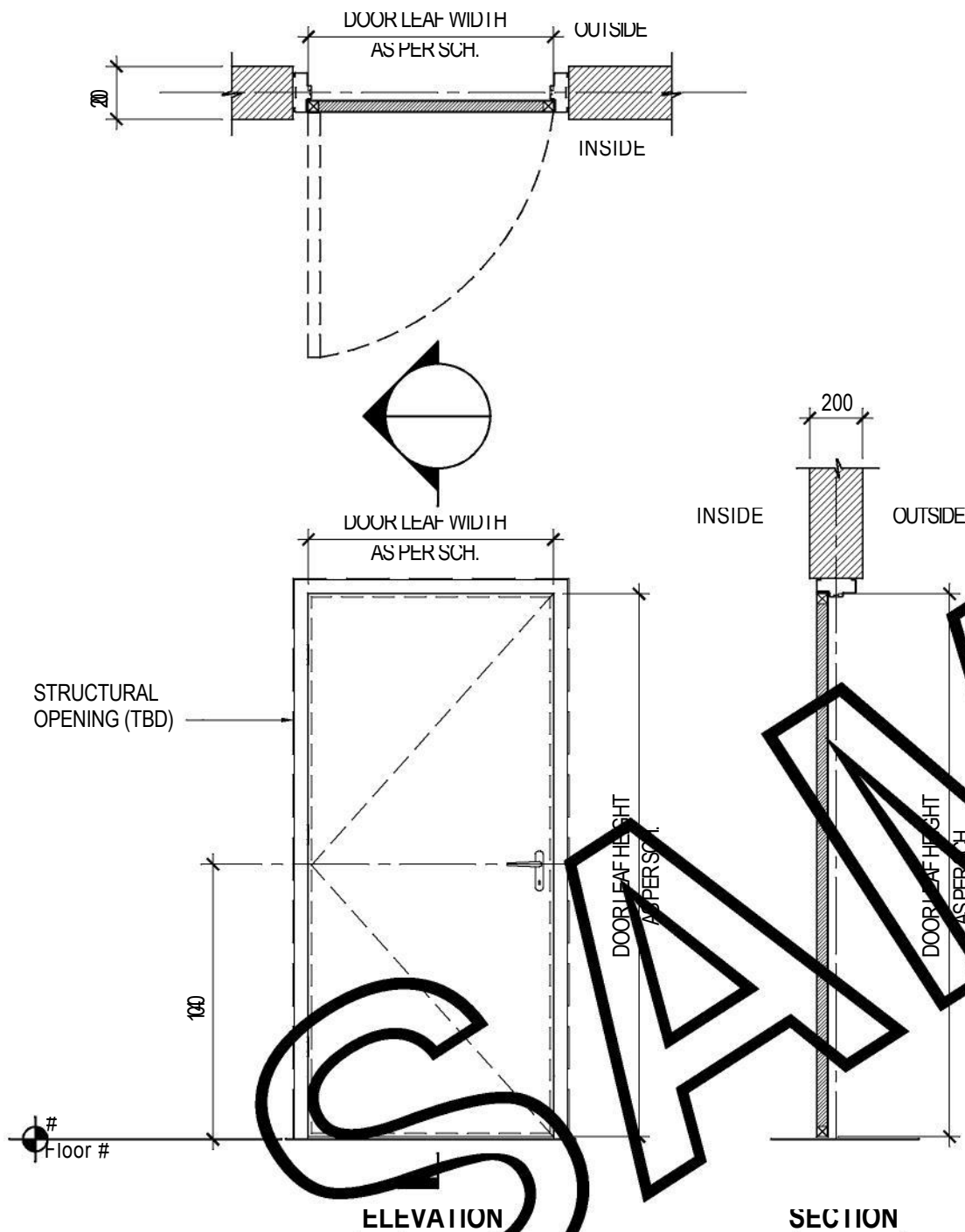


ENGINEER REVIEW STATUS		DATE:	NAME:
	A - REVIEWED; WORK MAY PROCEED		
	B - REVIEWED WITH COMMENTS; REVISE & RESUBMIT; WORK MAY PROCEED SUBJECT TO INCORPORATION OF COMMENTS		
	C - OBJECTION - REVISE & RESUBMIT; WORK MAY NOT PROCEED		
	D - REJECTED		
	E - REVIEW NOT REQUIRED; WORK MAY PROCEED		



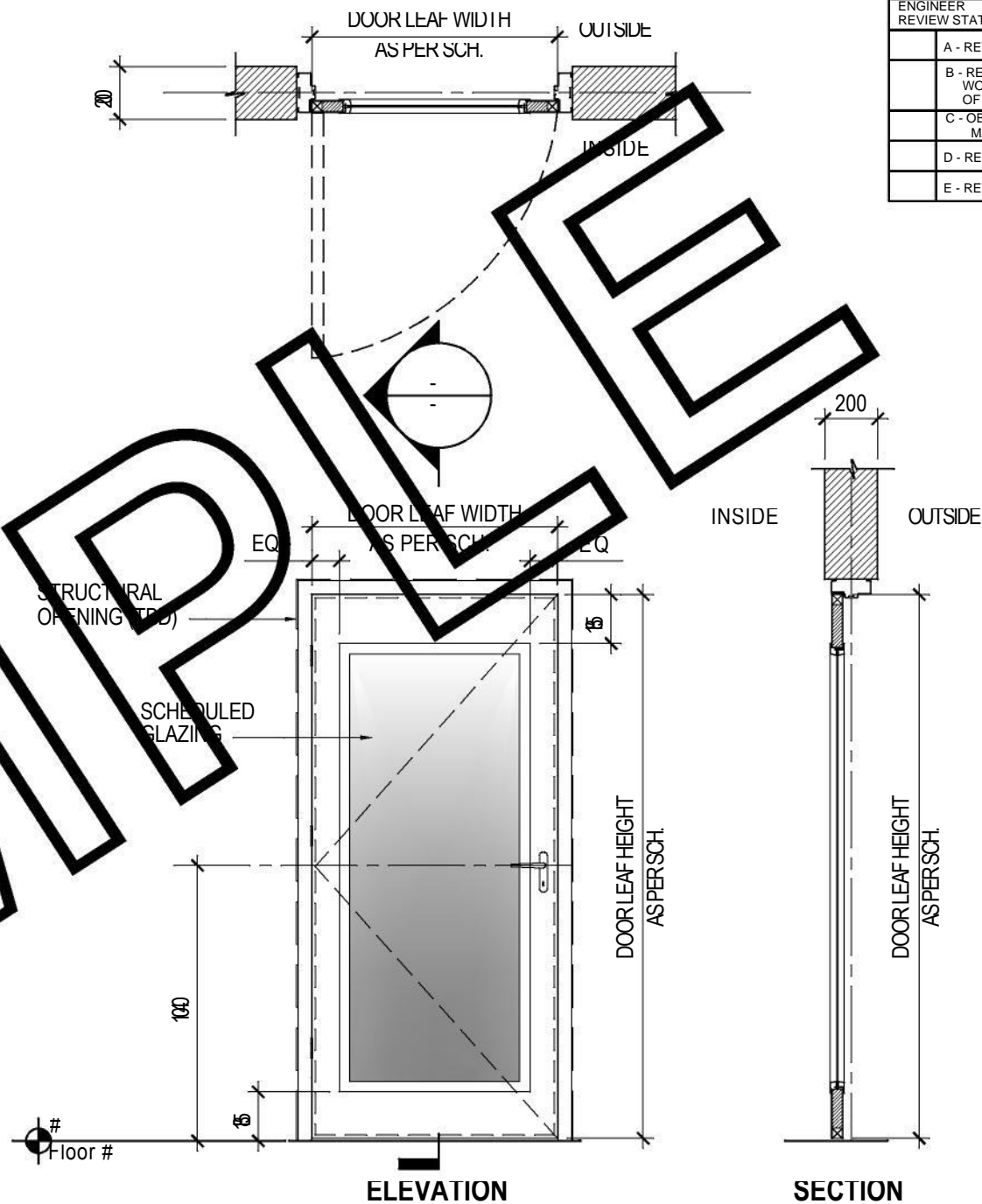
**DOOR DETAIL TYPE - "A1"  
SOLID CORE FLUSH DOOR**

1:25@A3

**NOTE:**

REFER TO HEAD AND JAMB DETAILS FOR INSTALLATION SPECIFIC INFORMATION.

1. THIS DRAWING IS ISSUED ONLY AS A SAMPLE FOR STANDARD DRAWINGS.
2. ENTITY SHALL IDENTIFY AND DEVELOP STANDARD DRAWINGS FOR USE ON ITS PROJECTS.
3. GENERAL NOTES ON STANDARD DRAWINGS TO CONTAIN, AS A MINIMUM, REFERENCE TO RELEVANT KEY DESIGN REQUIREMENTS (e.g. SPECIFICATION, MATERIAL, CODES, ETC.)
4. WHEREVER APPROPRIATE MATERIAL TAKE OFF (MTO) IN A TABLE FORMAT TO BE PROVIDED IN THE DRAWING WITH DETAILS OF EACH COMPONENT (e.g. BOLTS, SUPPORT, STEEL SECTION, FLANGE, GLAND, ETC.)
5. REFERENCE TO GENERAL NOTES, LEGENDS, ABBREVIATIONS, SECTION DETAILS, ETC., AS APPROPRIATE, TO BE PROVIDED ON STANDARD DRAWINGS.
6. STANDARD DRAWINGS SHALL UNDERGO CHECKING APPROVAL PROCESS.



**DOOR DETAIL TYPE - "A2"**  
**SOLID CORE FLUSH DOOR w/VISION PANEL**

1:25@A3

**NOTE:**

**REFER TO HEAD AND JAMB DETAILS FOR  
INSTALLATION SPECIFIC INFORMATION.**

[illegible]